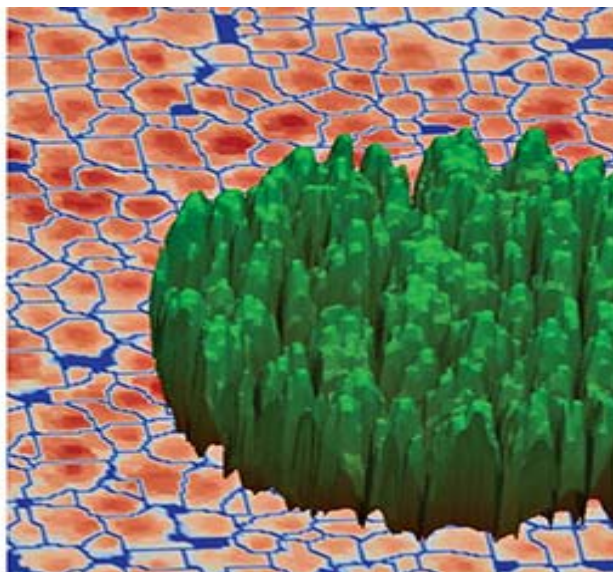


Beyond GCFF – update on new proposals and future bids

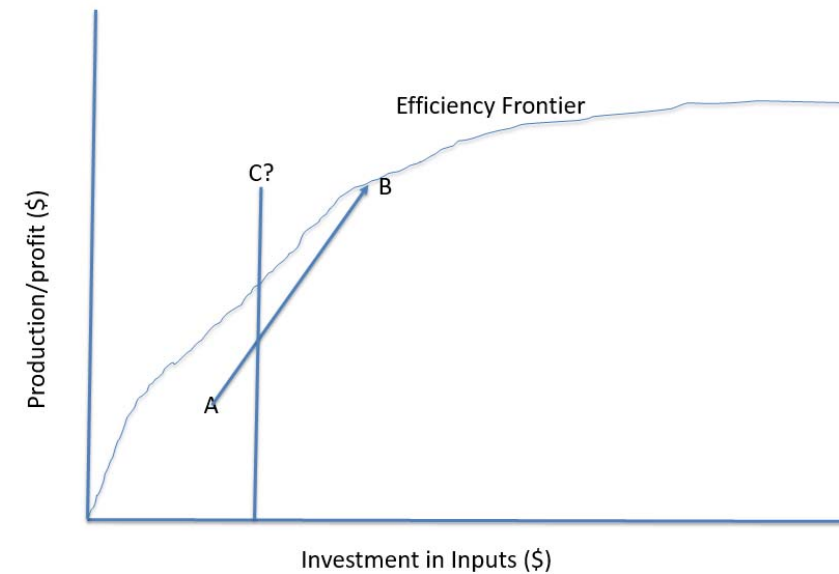
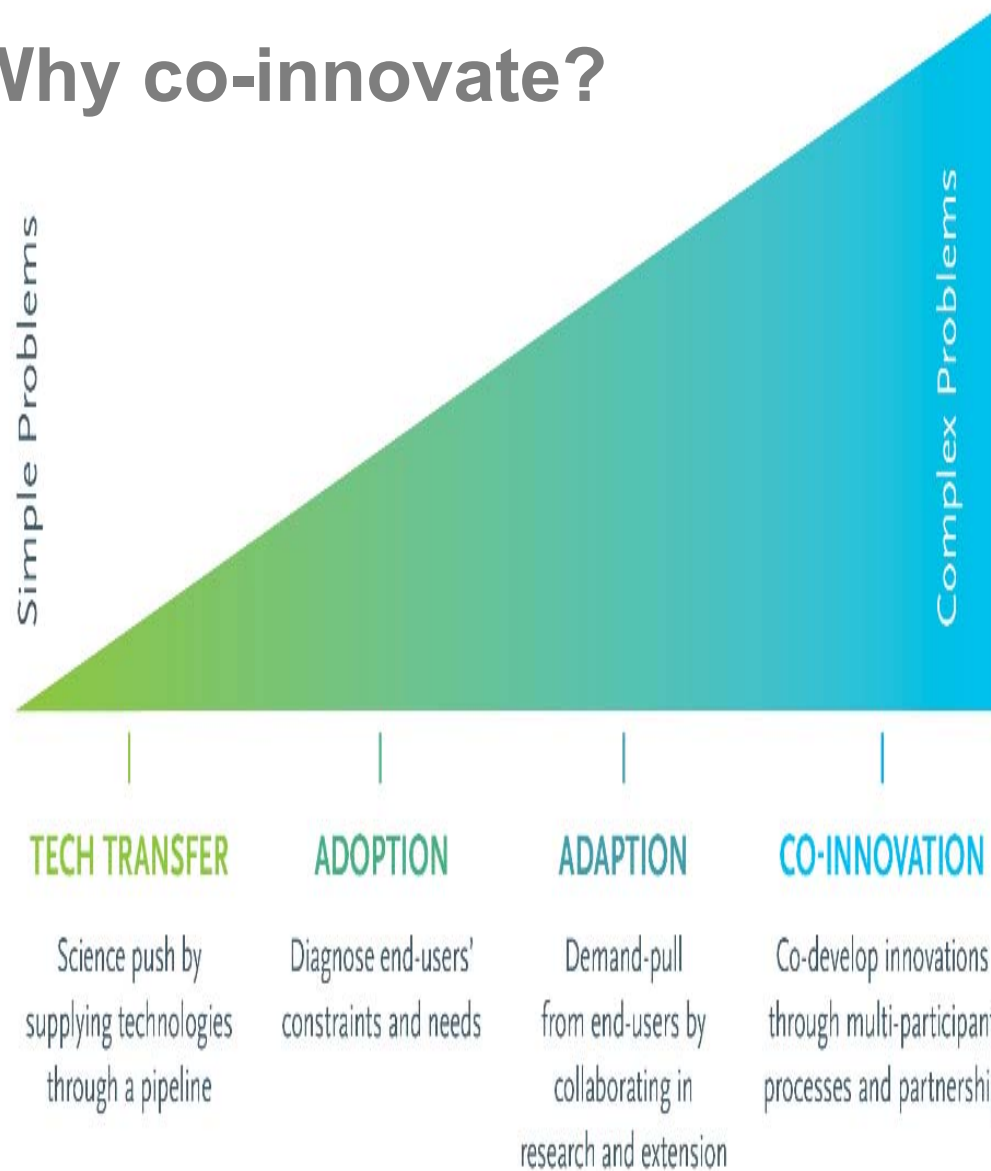
Peter Clinton 4th April 2018, Rotorua



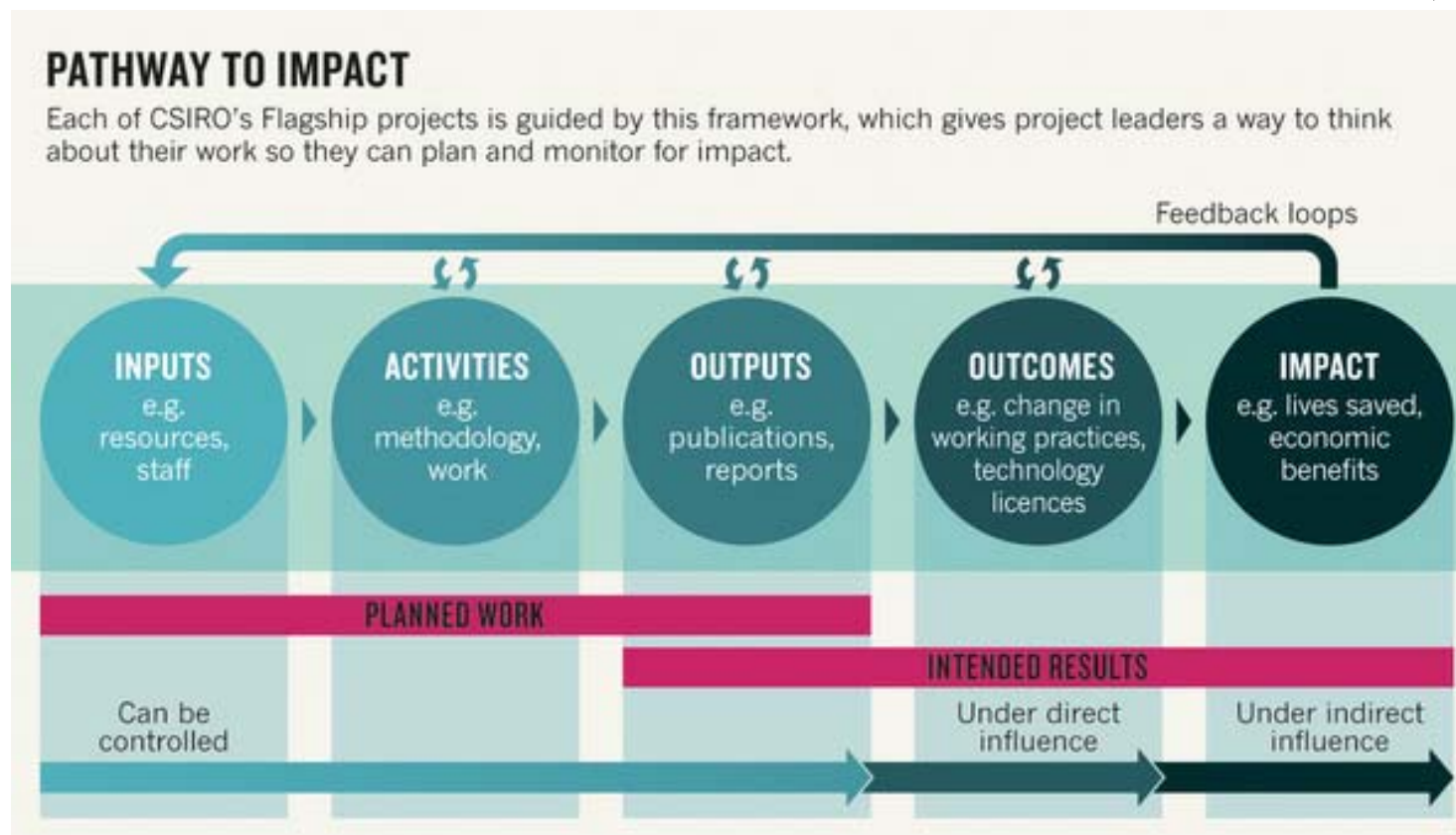
Process time line

- March 2018 (Endeavour fund Bids submitted) (Connections matter, SLO)
- April 2018 Detailed consultation begins on post GCFF – co-innovation
- May-August 2018 Possible partnerships
- September 2018 productivity and uniformity summit, any successful new bids would start
- February 2019 review draft endeavour proposals
- March 2019 Endeavour fund bids submitted
- ?? Vote on levy extension
- September 2019 GCFF wind up and new programme/s start

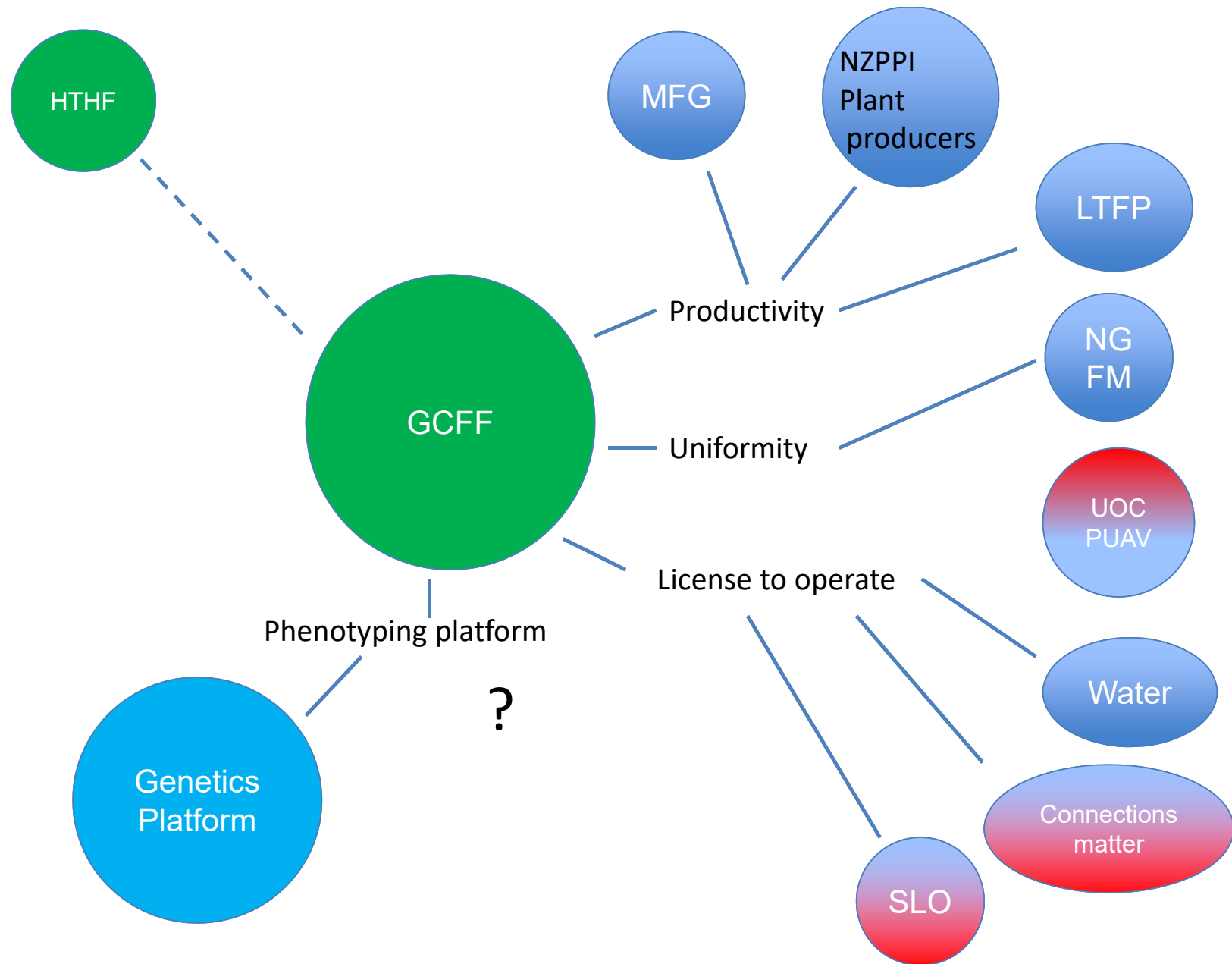
Why co-innovate?



Making a difference



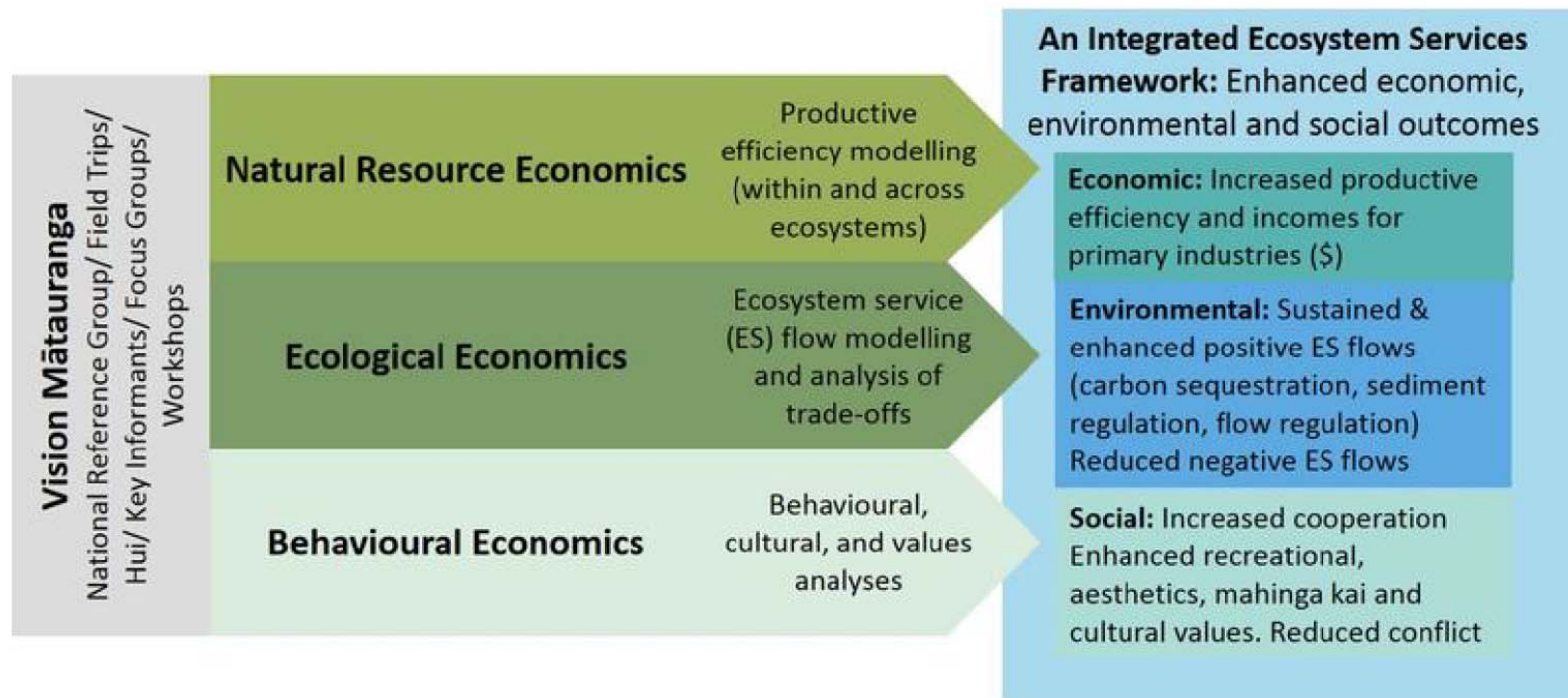
Branwen Morgan 2014. Research impact: Income for outcome. Nature 511, Pages:S72–S75
published:(24 July 2014)DOI:doi:10.1038/511S72aPublished online 23 July 2014



Possible MBIE proposals March 2019

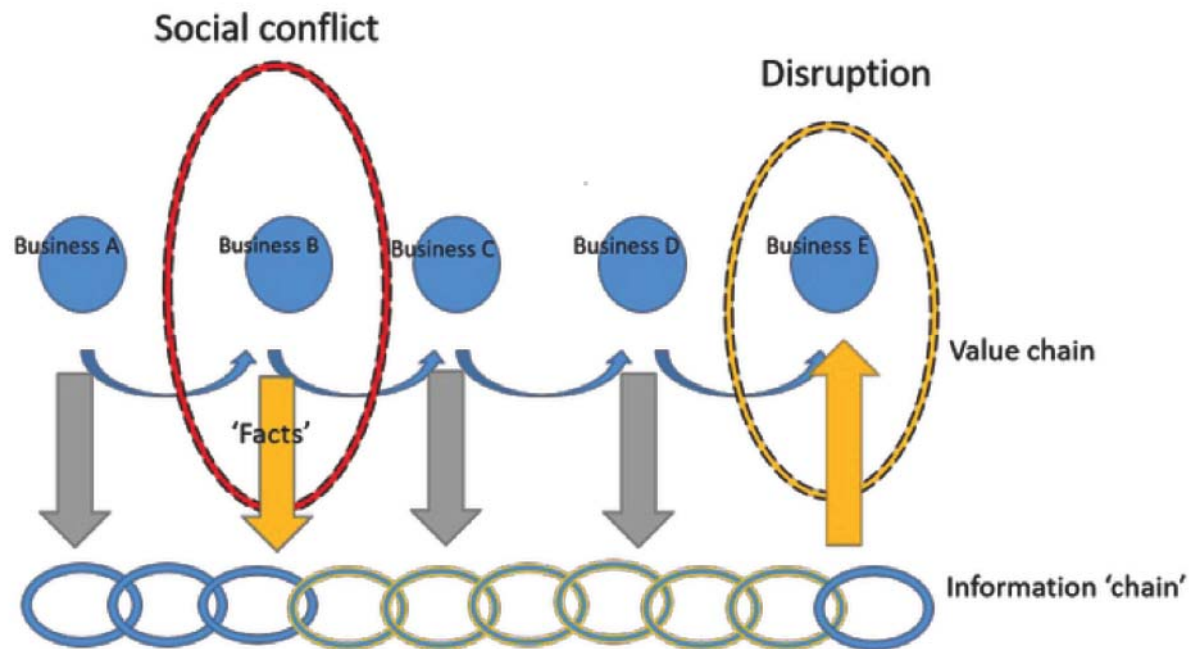
	Submitter	Value/duration	Title
¹	Steve A Wakelin	\$920K/annum for 4 years	How much wood would a microbe make....?
²	John Moore	\$2M/annum for 5 years	More wood, not corewood
⁵	?	\$1.8M/annum for 5 years	Next generation plant propagation (NGPP)
⁹	Dean Meason	TBC!	Exotic forestry's role in the hydrological landscape – quantifying the value and impact on water quantity and quality on downstream users
¹¹	?	\$600K/annum for 4 years	Soil carbon sources, stability, and contribution to forest productivity

Connections matter: Building an interactive ecosystem framework for a productive and resilient New Zealand



‘The physical, economic and social connections between neighbouring terrestrial and marine ecosystems are often obvious but poorly understood. Failure to account for such connections can lead to conflict, poor stakeholder coordination and environmental degradation.’

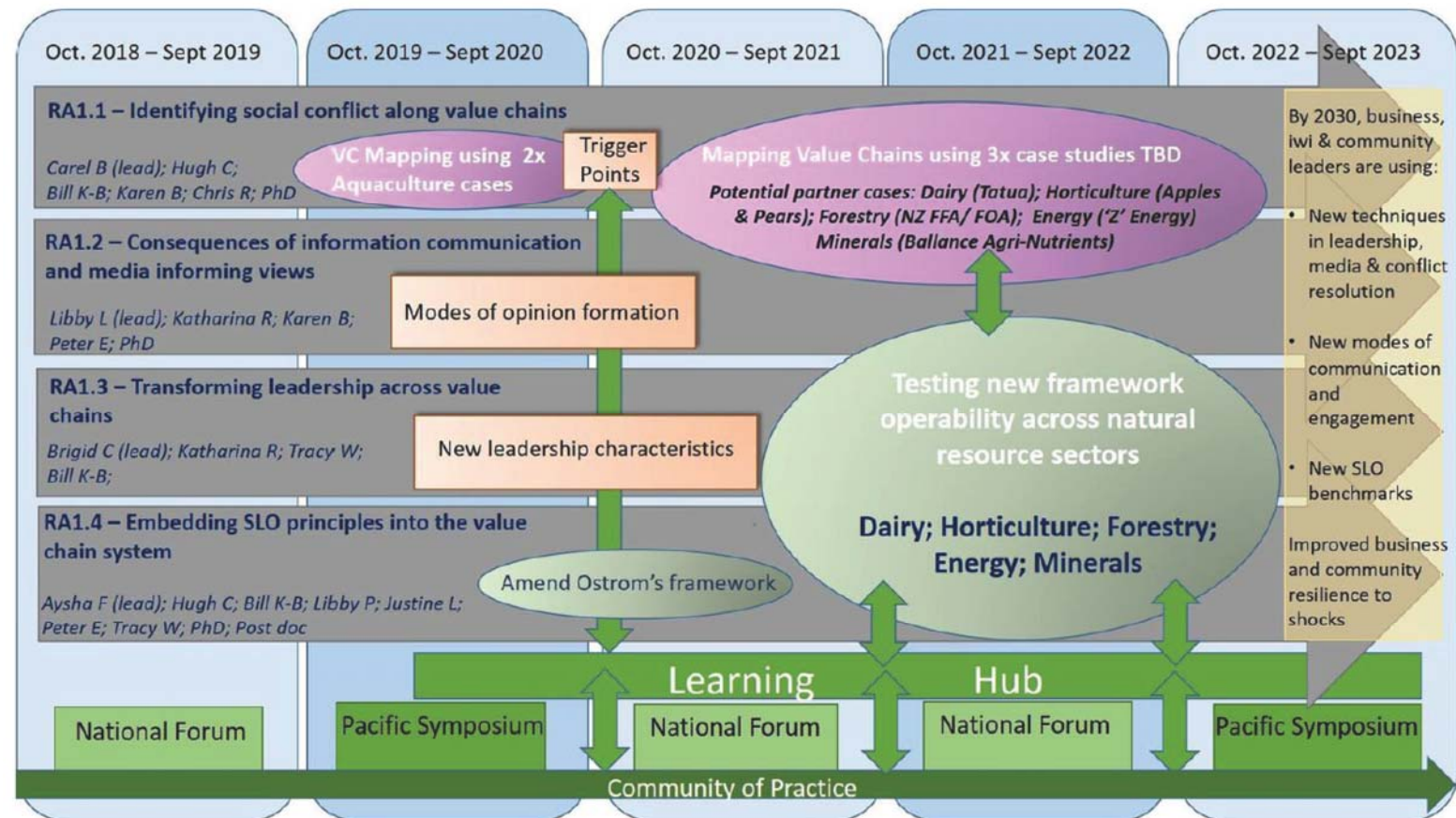
Navigating social conflict along value chains - the “Social License” Research Programme



‘Public opinion and subsequent action can disrupt business activities directly, indirectly via their extended global chains, and influence consumer sentiment, causing market uncertainties; but also signals opportunities to innovate and improve.’

What we plan to do

- Map value chains and identify social conflict points
- Examination of information, communication and media
- Transforming leadership across value chains and in communities
- Embedding SLO principles





Peter Clinton
GCFF Programme Leader
Peter.Clinton@scionresearch.com

www.scionresearch.com

www.gcff.nz

www.fgr.nz

Date:

