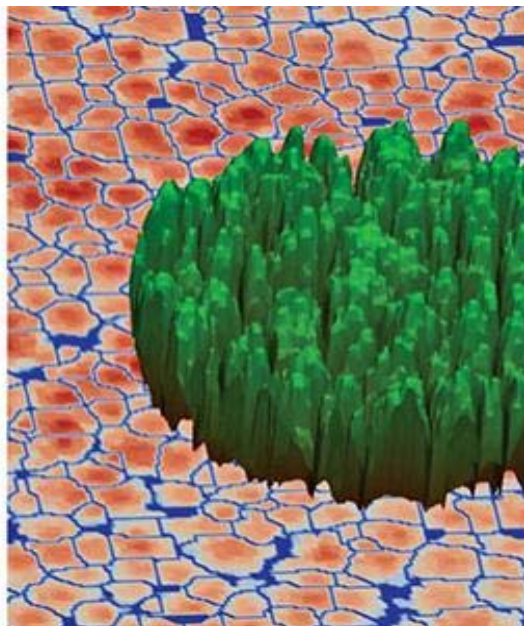
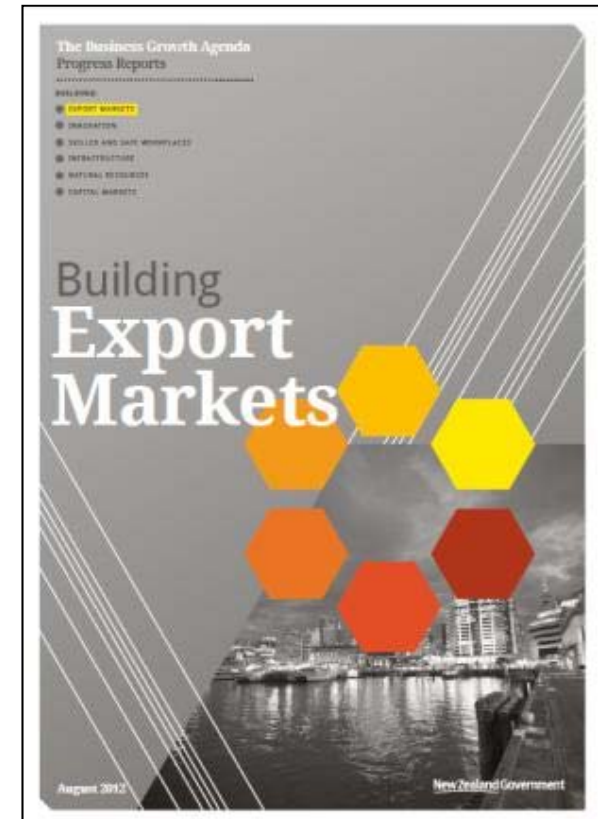
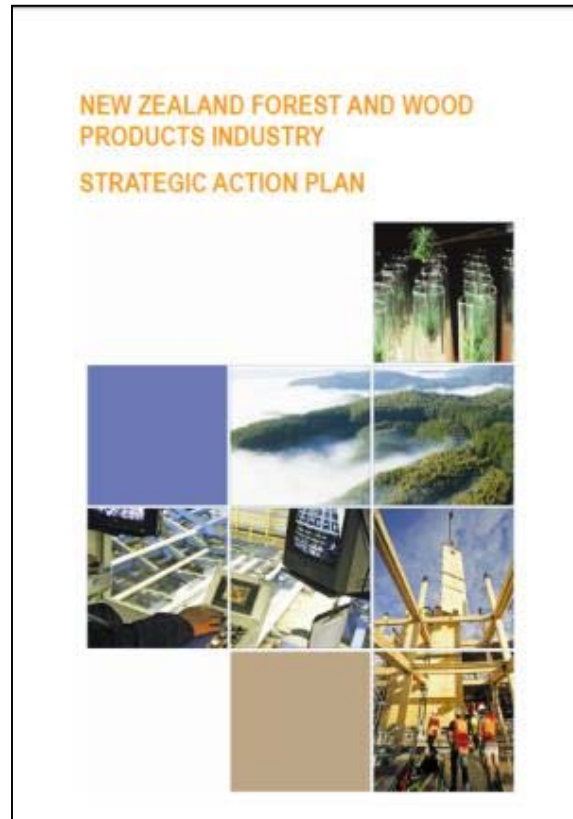


The vision: partners in impact.

Peter Clinton 24 March 2015, Christchurch

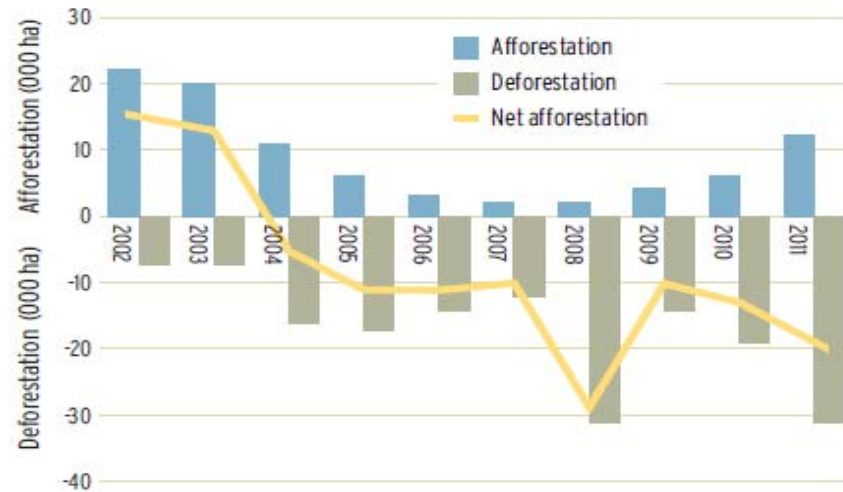


What are the Drivers for the Programme?



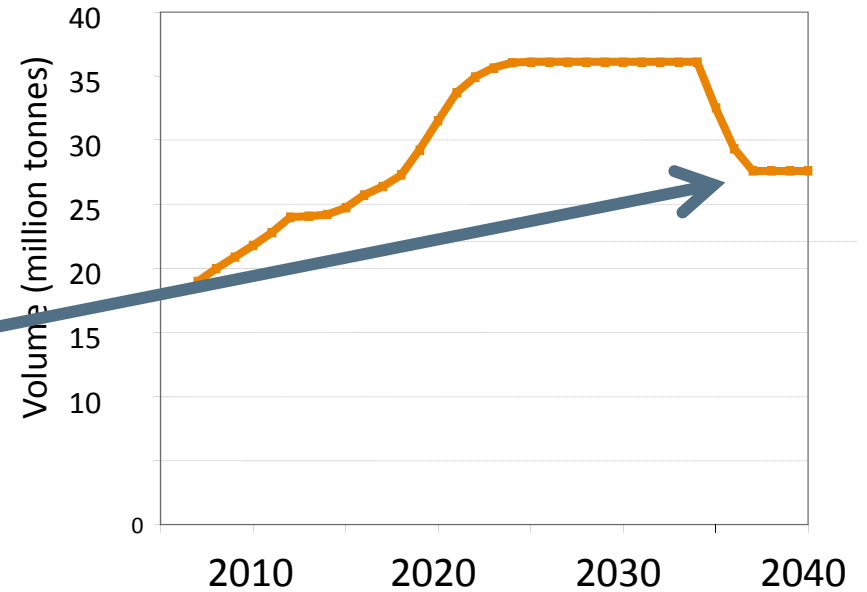
Operating context: planted forest supply shrinking, demand growing

YEARLY AFFORESTATION AND DEFORESTATION 2002-2011

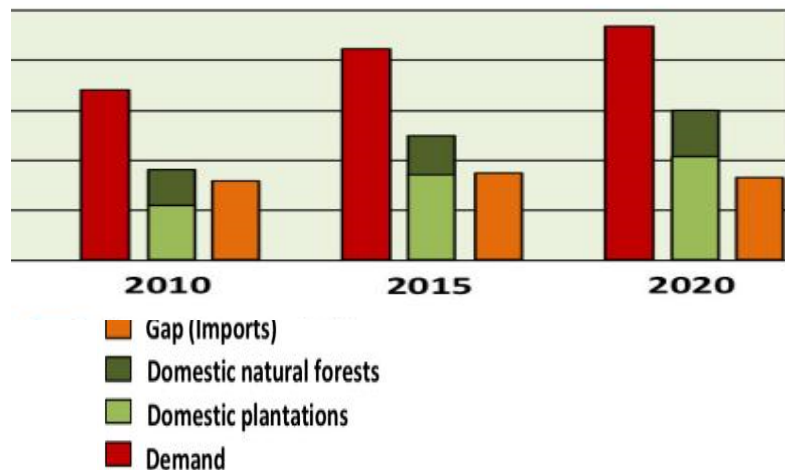


Deforestation is occurring in New Zealand. Source: *Wood Matters*; Issue 57, September, 2013. Source: *MPI - National Exotic Forest Description*, April 2012.

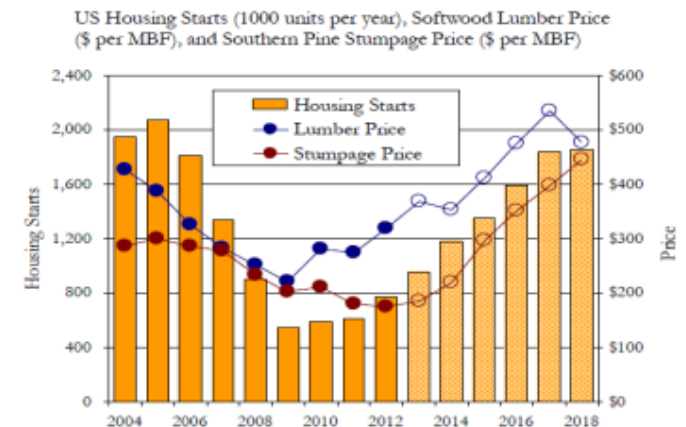
NZ radiata pine volume



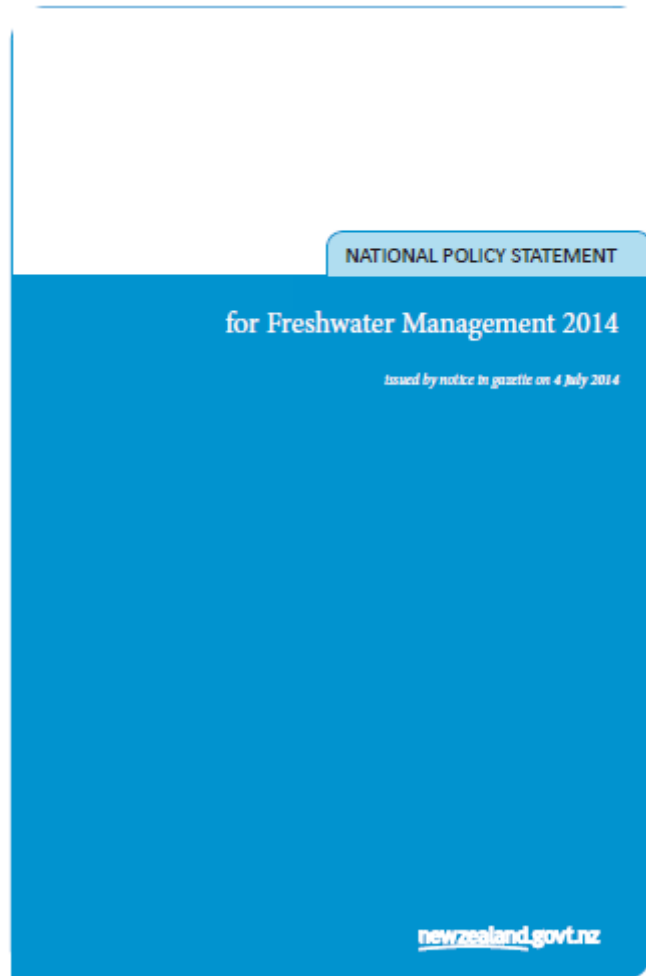
China demand > supply



US Housing Recovery will Boost Lumber and Timber Prices



Primary sectors: a complex operating environment



The New Zealand Herald

New national standards for lakes and rivers

National water quality standards will be introduced for New Zealand's lakes and rivers, the Government has announced today.

The new policy means, for the first time, rivers and lakes will have minimum requirements that must be achieved so the water quality is suitable for ecosystem and human health.

Freshwater reform
2013 and beyond

Message from the Ministers

most comprehensive and positive reform of our freshwater management system for a generation.

Growing Confidence in Forestry's Future

- MBIE contract C04X1306 - \$3.375 million p.a. over 6 years
- Co-funded by forest growers through the levy - \$1.6 m p.a.
- The main focus is to:
 - Maximise the benefits from the existing forest resource
 - Build a more productive forest resource for the future
 - Ensure that future intensification is sustainable and does not jeopardise industry's licence to operate
- Goal is to build more productive, resource-efficient forests that provide the raw material base for added-value processing

Research Themes and Outcomes

- RA1 – Maximising benefits from existing forests
 - Mid-rotation interventions are being applied to increase productivity
 - New segregation approaches are being used operationally
- RA2 – Building more productive, higher quality forests for the future
 - Remote sensing technologies are providing quantitative information on forests that is being used to guide management
 - Phenotyping platform has been used to identify elite individual trees for at least one trait
- RA3 – Sustainability under intensified regimes
 - Forest industry's licence to operate has been maintained under intensified regimes
- RA4 – Closing the gap (Working with industry to create impact)

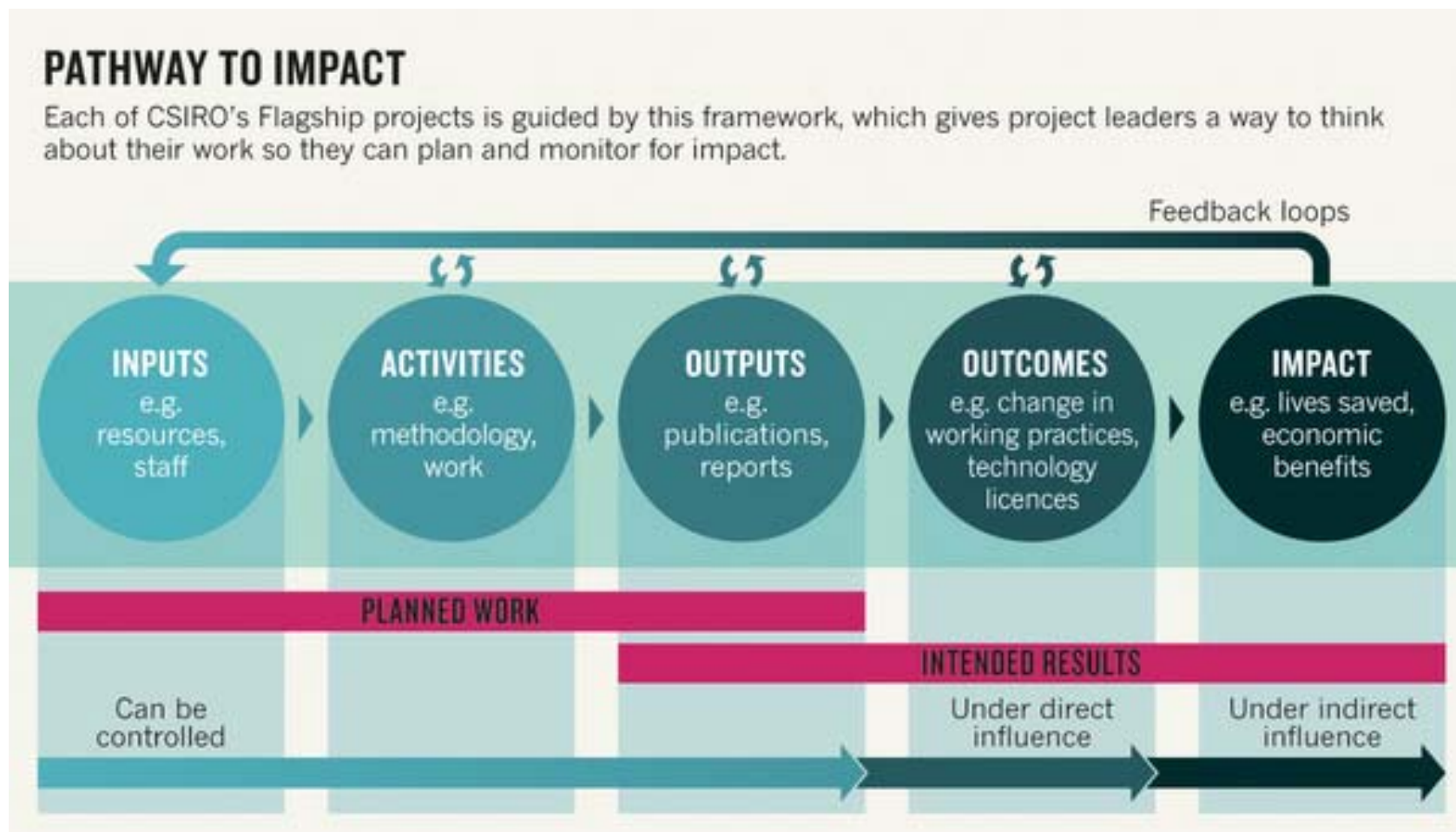
Goals for the next two days

- Communicating science
- Listening to you
- Building a stronger partnership
- Enabling innovation
- Laying the foundations for impact

Joining the dots – from Science to impact, owning it!

- Jointly visualising the future - what does the future hold?
- What would be a positive outcome of this research?
- Creating impact for the forest growing industry – how will today make a difference?
- How can we better get the message out – innovation clusters and ??

Making it happen: Innovation Cluster groups



Branwen Morgan 2014. Research impact: Income for outcome. Nature 511, Pages:S72–S75
published:(24 July 2014)DOI:doi:10.1038/511S72aPublished online 23 July 2014



<http://research.nzfoa.org.nz/>
www.scionresearch.com/gcff

Peter Clinton, Science Leader Forest Systems
Peter.Clinton@scionresearch.com



Funding Support Provided by the Forest Growers Levy Trust

